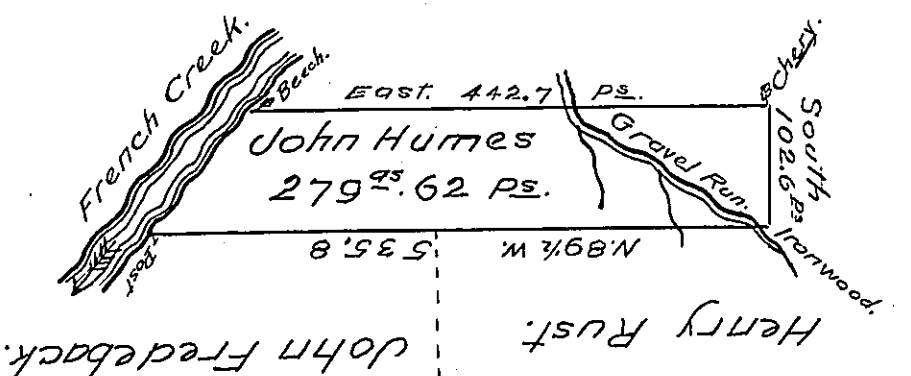


Archibald Humes.



Courses and distances
up French Creek.—

N. 73/4	E. 26.0	ps
N. 51 1/2	E. 7.5	
N. 62 1/2	E. 16.0	
N. 54	E. 8.0	
N. 45	E. 8.0	
N. 39	E. 20.0	
N. 27	E. 18.0	
N. 20	E. 13.5	
N. 22	E. 26.0	
		<u>143.0 Ps.</u>

In Pursuance of a Warrant for 250 acres of land dated the 4th day of March A.D. 1813 was Surveyed 27th day of May 1813 for John Humes the above described tract of land containing 279^{as} 62 Ps and Allowance of six per Cent for Roads &c Situate in Rockdale Township Crawford County Pa he the said John Humes had Cleared fenced and Cultivated at least 20 acres of the Land and had a family Living on the same under him and had erected a house and other buildings thereon I do hereby certify that the above is a True Copy of Survey Remaining of Record in the Survey Books in my office and Having Examined the same on the ground found it to be correct. April 24th 1829

To Gabl. Hiester Esq S. G. } James Herrington
Land Office of Pennsylvania } Dp. S. C.

IN TESTIMONY that the above is a copy of the original remaining on file in the Department of Internal Affairs of Pennsylvania, made conformably to an Act of Assembly approved the 16th day of February, 1833, I have hereunto set my Hand and caused the Seal of said Department to be affixed at Harrisburg, this Twenty eighth day of February 1905.

James R. Brown
Secretary of Internal Affairs.